

release date : 2012.08.06
model : QVI-EVQ-V1.1 / product code : EVQ-1207-001

Range Rover EVOQUE

Video Interface

Installation

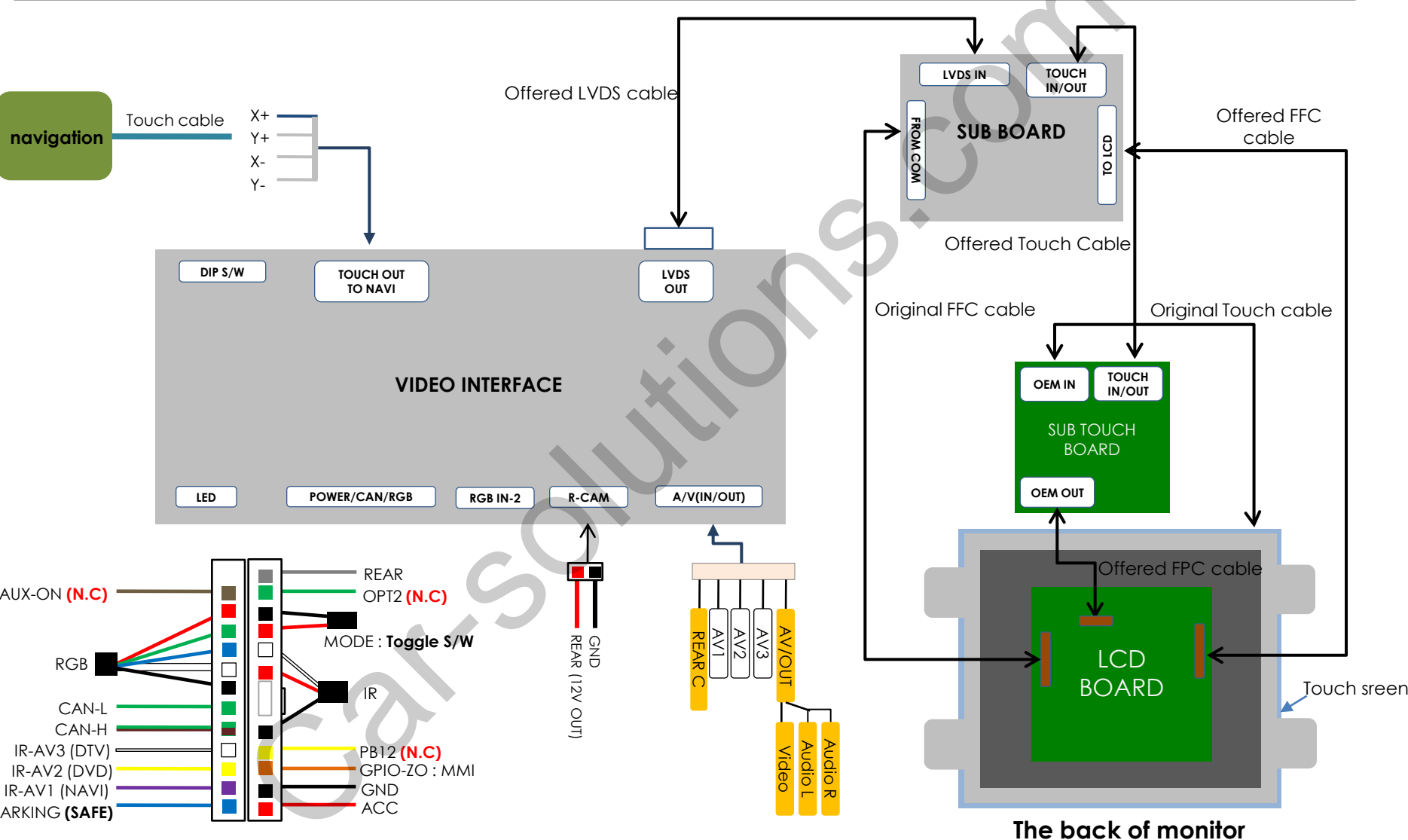
Contents

1. Installation

1.1 Installation diagram	3
1.2 Installation	4

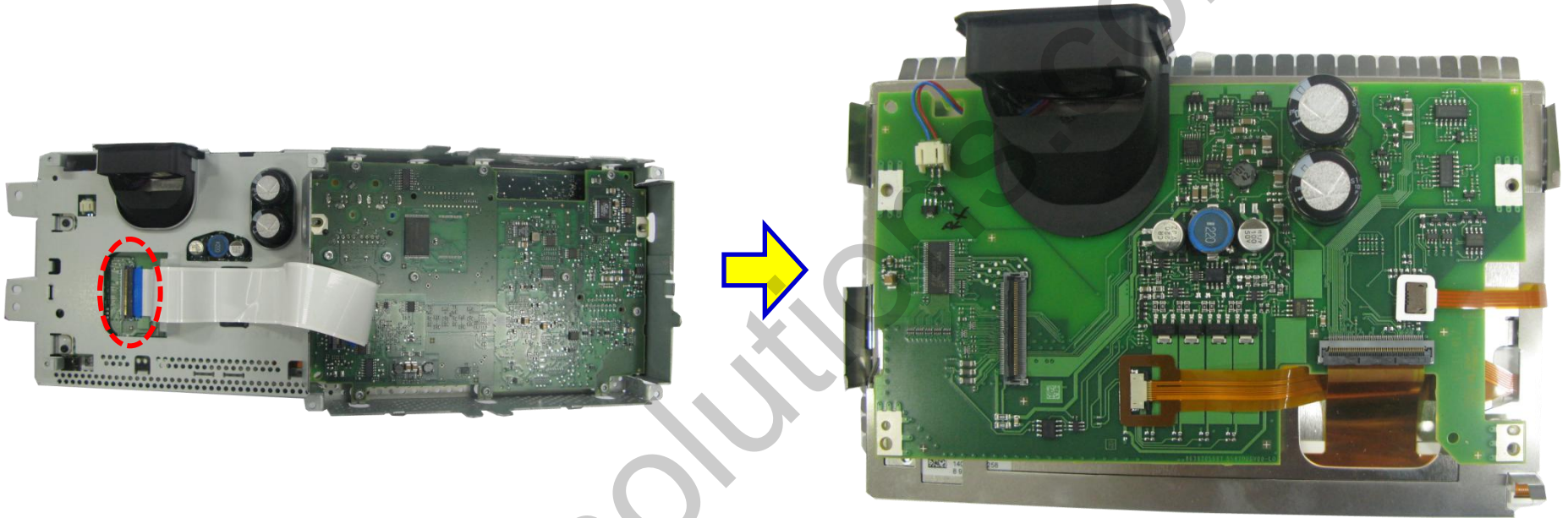
Note! FFC cable from the package should be correctly connected to the sub-board.
Otherwise the monitor can be damaged.

1.1 Installation diagram



1.2 Installation

1. Separating the monitor, unplugging original FPC cable

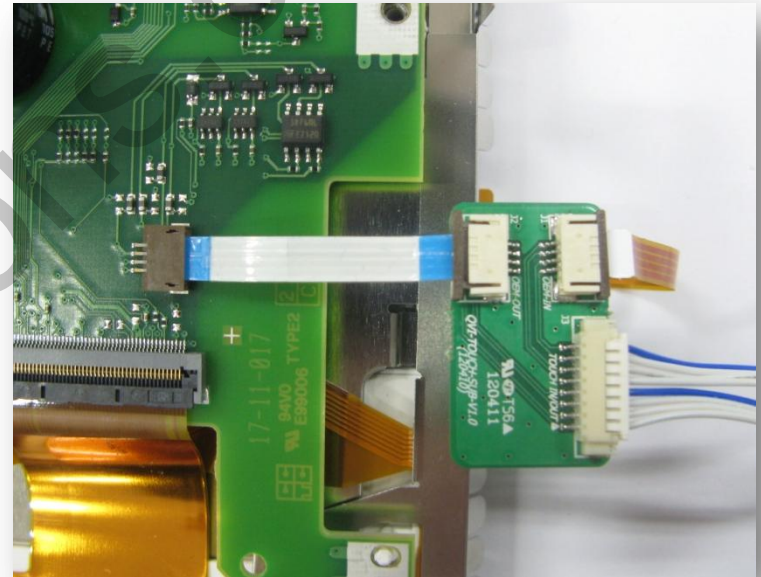
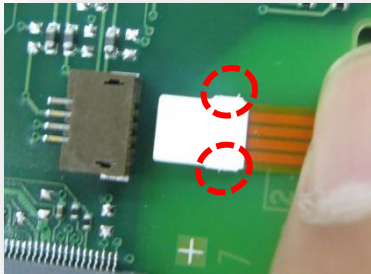
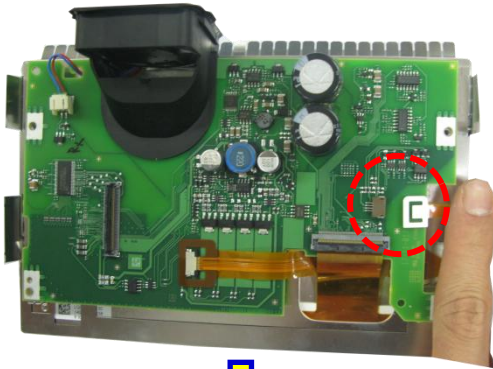


- ① First of all, divide the monitor from the head unit as shown above.
- ② Unplug original FFC cable as the marked point

- ③ After unplugging original FFC cable and dividing bracket as shown above

1.2 Installation

2. Connect offered Touch cable, FFC cable, original touch cable to offered touch-subboard

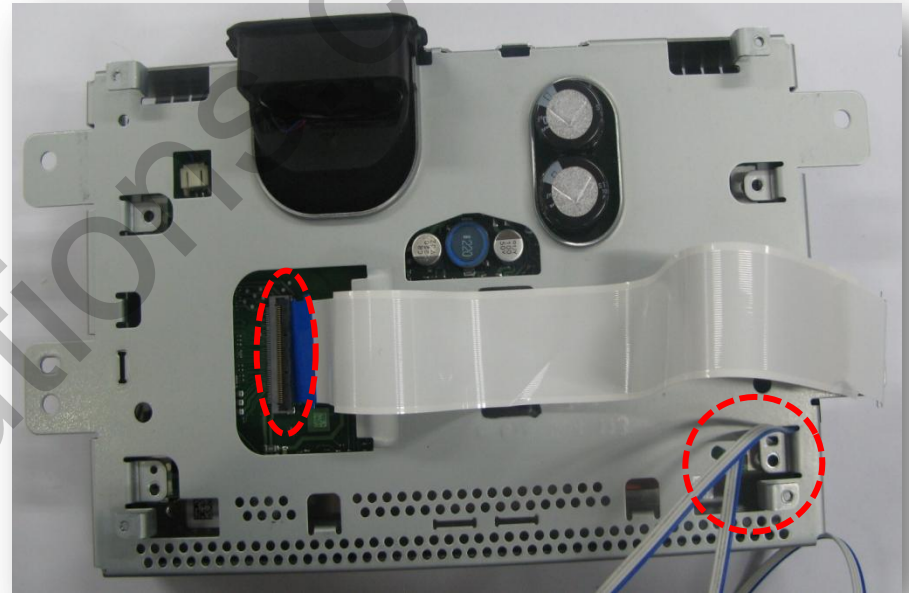
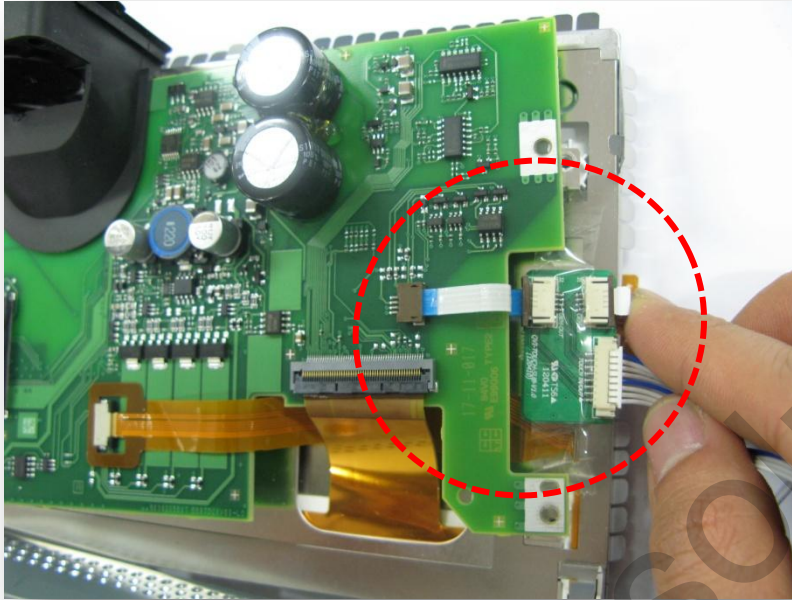


① Unplug original touch cable from the LCD board, and cut the side of cable, and connect the cable with offered touch-subboard

② Connect offered FFC cable with offered touch-subboard and original LCD board
③ Connect offered touch cable with offered touch-subboard

1.2 Installation

3. Be locked up touch-subboard and assembling



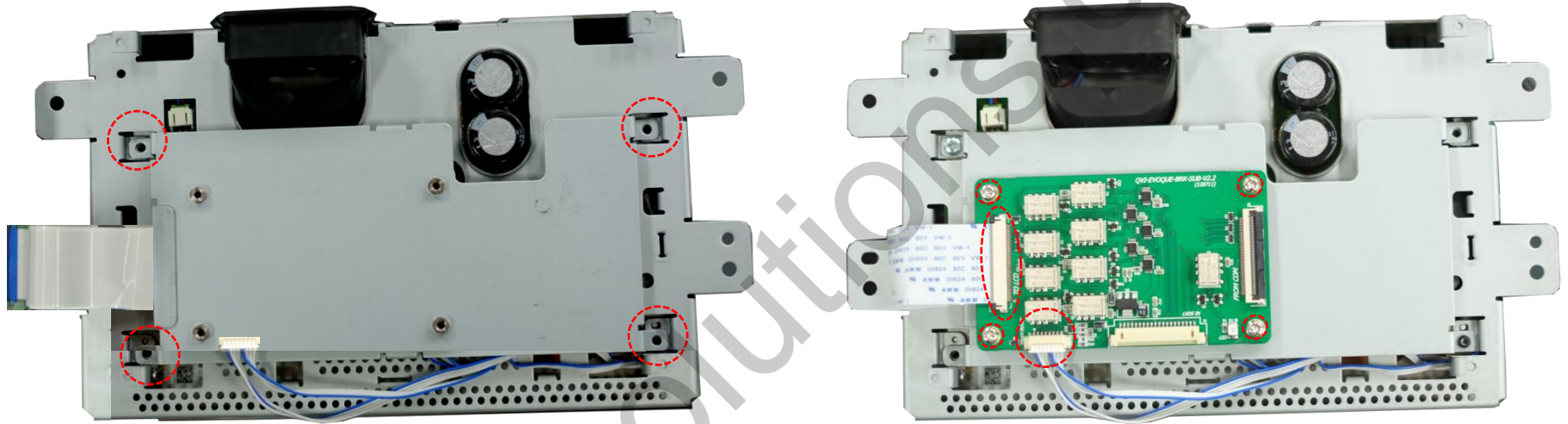
① Be locked up offered touch-subboard to marked point as using the tool

② After pull out the offered touch cable from bracket, assemble the bracket with LCD board, and connect original FFC cable.

Note! FFC cable from the package should be correctly connected to the sub-board. Otherwise the monitor can be damaged.

1.2 Installation

4. Connect with Sub board



① After assembling the offered bracket,
Pull out the offered FFC cable through
the offered bracket

② Assemble the offered Sub-board with the offered bracket
③ Connect the offered FFC cable with the offered Sub-board
"To LCD", And Connect the offered Touch cable with the
offered Sub-board "TOUCH INOUT"

**Note! FFC cable from the package should be correctly connected to the sub-board.
Otherwise the monitor can be damaged.**

1.2 Installation

5. Connect the offered Touch cable and the offered LVDS cable

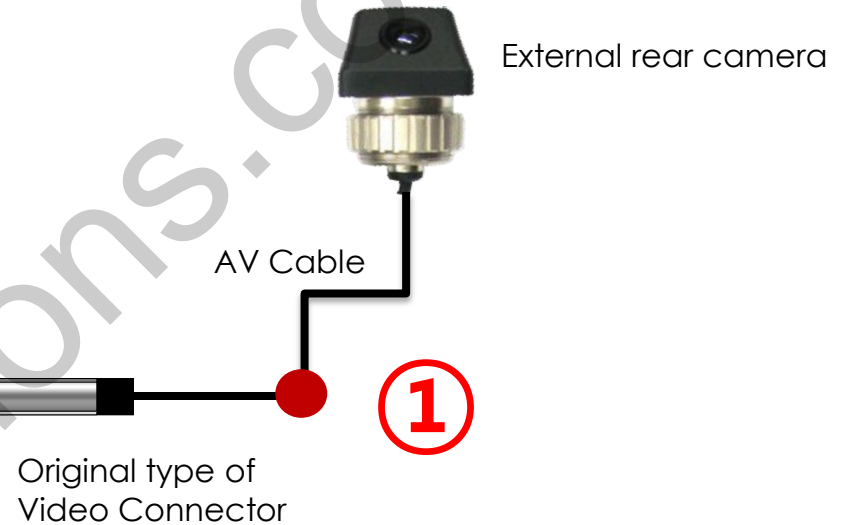
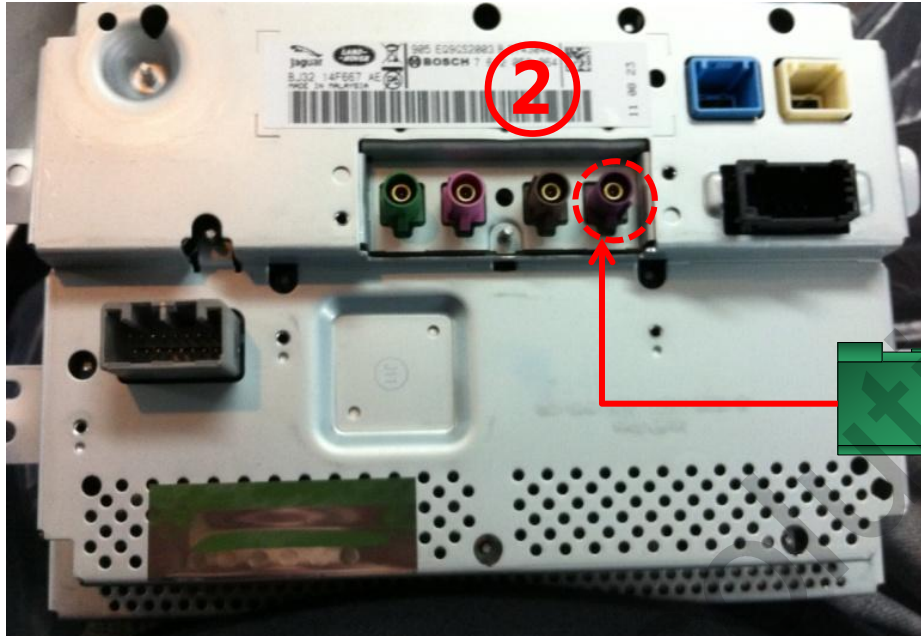


① The Offered LVDS cable connect with the offered Sub-board "LVDS IN" , And the Original FFC cable connect with the offered Sub-board "FROM COM"

② The completed picture is as below

1.2 Installation

6. Install the external rear camera



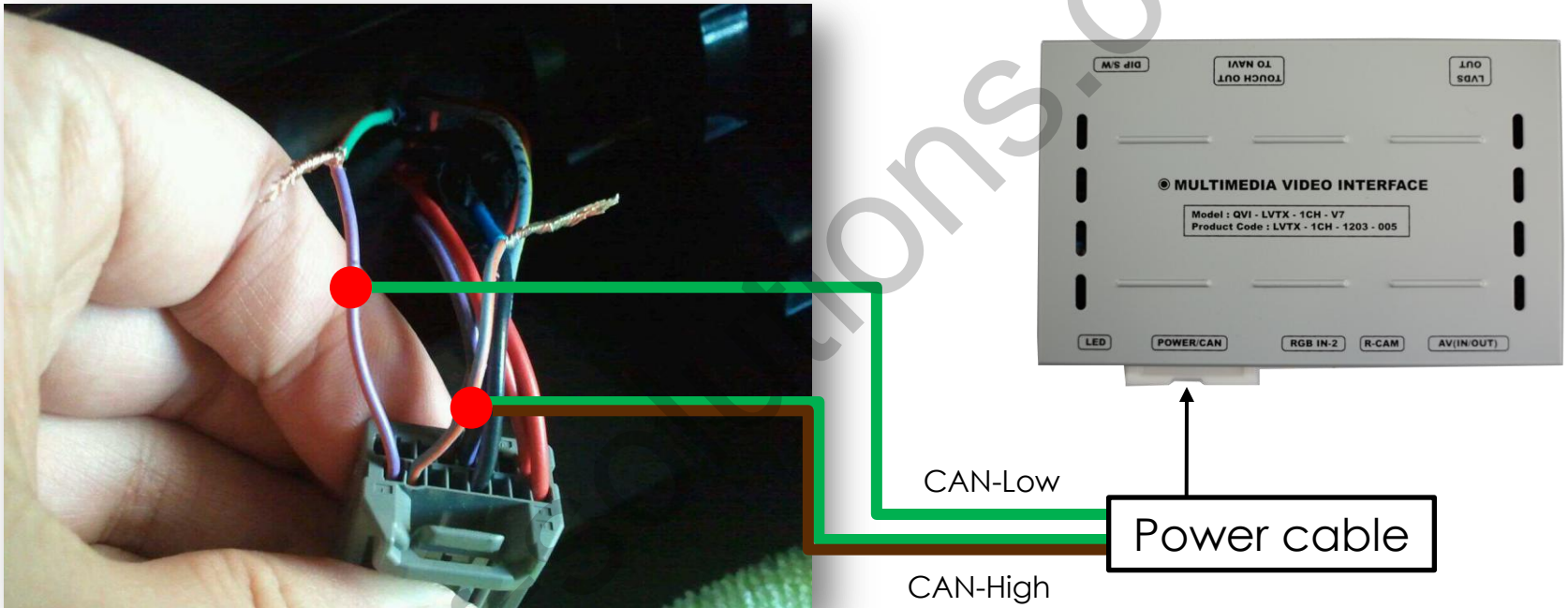
- ① AV cable of external rear camera with original type of video connector
- ② Original type of video connector connect with the marked point of the back of monitor
(Set the Dip switch 7 as ON)

※ If you connect Rear-c cable of Interface with Rear camera, you must exchange original navigation mode to see external rear camera

1.2 Installation

7. Connecting CAN cable respectively

The LCD cable in the back of monitor connect with offered powercable



Connect CAN-H cable (green+brown) enclosed in our package with the original CAN-H cable (grey+orange).
And connect CAN-L cable (green) enclosed in our package with the original CAN-L cable (violet+orange).